

# **Chitubox Basic slicer software installation instructions**

## Step 1. Software Download

- **Download URL:**

Go to Chitubox official website <https://www.chitubox.com/zh-Hans/download/chitubox-free> to download the Chitubox Basic software to your computer desktop.

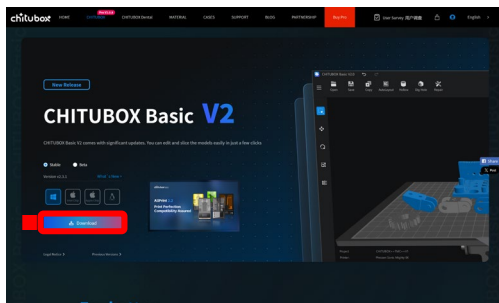
## Step 2. Profiles download

- **Printer profiles:** <https://purpledance.net/pages/technical-support>




Download the profile file to your computer desktop according to the serial number on the back of the printer :

1. For serial numbers beginning with PD103, please download: D8K Pro\_PD103\_CHITUBOX\_V23\_all\_4500.cfgx;
2. For serial numbers beginning with PD101, please download: D8K Pro\_PD101\_CHITUBOX\_V23\_all\_4500.cfgx;
3. For serial numbers beginning with PD68, please download: D9K Pro\_CHITUBOX\_V23\_all\_4500.cfgx;




- **Support profiles:** <https://purpledance.net/pages/technical-support>



Name

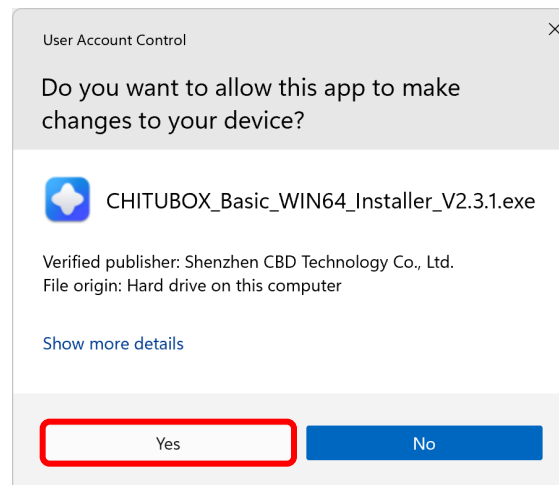
-  D8K Pro\_PD101\_CHITUBOX\_V23\_all\_4500.cfgx
-  D8K Pro\_PD103\_CHITUBOX\_V23\_all\_4500.cfgx
-  D9K Pro\_CHITUBOX\_V23\_all\_4500.cfgx

Name

-  Support\_setting\_profile\_Heavy\_00.cfgx
-  Support\_setting\_profile\_Light\_00.cfgx
-  Support\_setting\_profile\_Middle\_00.cfgx

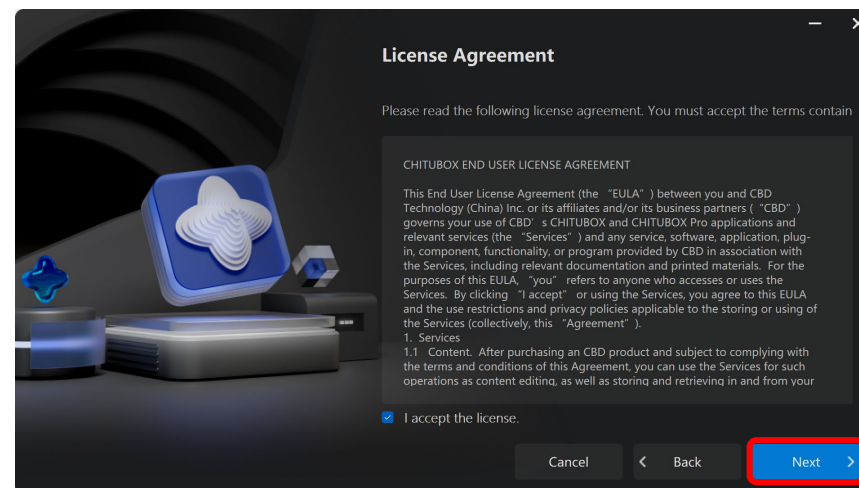
## Step 3. Installation of the slicer software

- **After download:** In the download path of your browser, find the downloaded Chitubox Basic software installation file. The file format is usually.exe.
- **Run the installer:** Double-click the installation file in.exe format. Windows may pop up a user account control window for security reasons. The window will ask you if you want to allow this app to make changes to your device. To proceed smoothly with the software installation process, please click the Yes button and the system will continue with the subsequent installation operations.



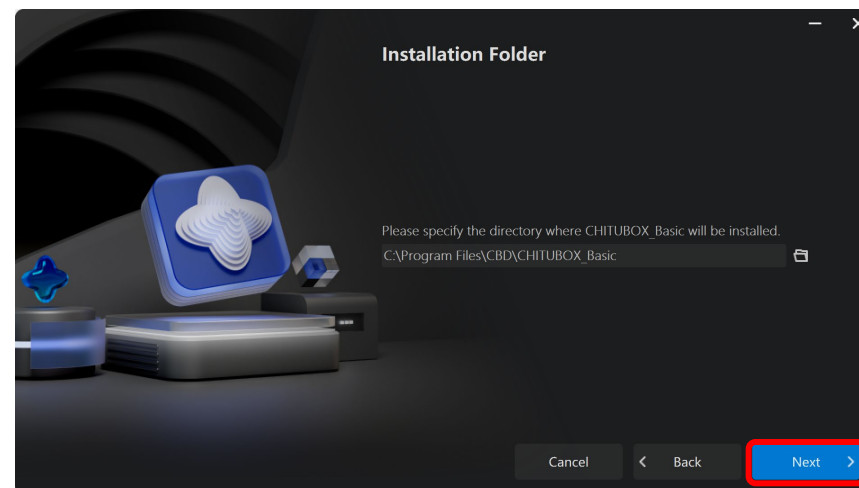
## Step 3. Installation of the slicer software

- **Installation Wizard Interface:** After successfully entering the installation wizard, the first thing you see is the license agreement page of the software. The license agreement describes the terms and conditions of use of the software in detail. Please read the agreement carefully to fully understand the rights and obligations in the process of using the software. If you agree with all the terms of this Agreement, check the "I accept this license" option on the page and click the "Next" button at the bottom of the page to proceed to the next installation settings.



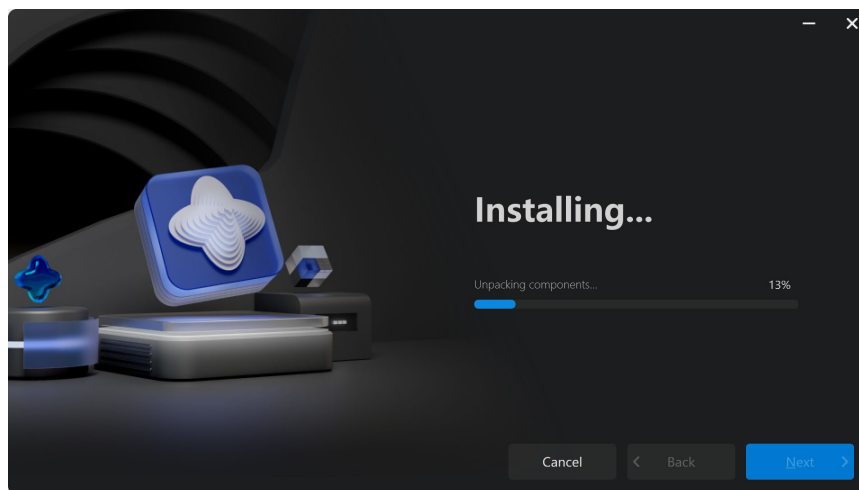
## Step 3. Installation of the slicer software

- **Select the installation location:** The next page allows you to choose the installation path of the software. By default, Chitubox Basic is installed in the Program Files folder on the system disk (usually C disk). If you want to install the software to another disk partition or custom folder, click the "Browse" button on the page, select the desired disk drive and specific folder in the pop-up File Explorer window, click "OK" after selection, and then click "Next"



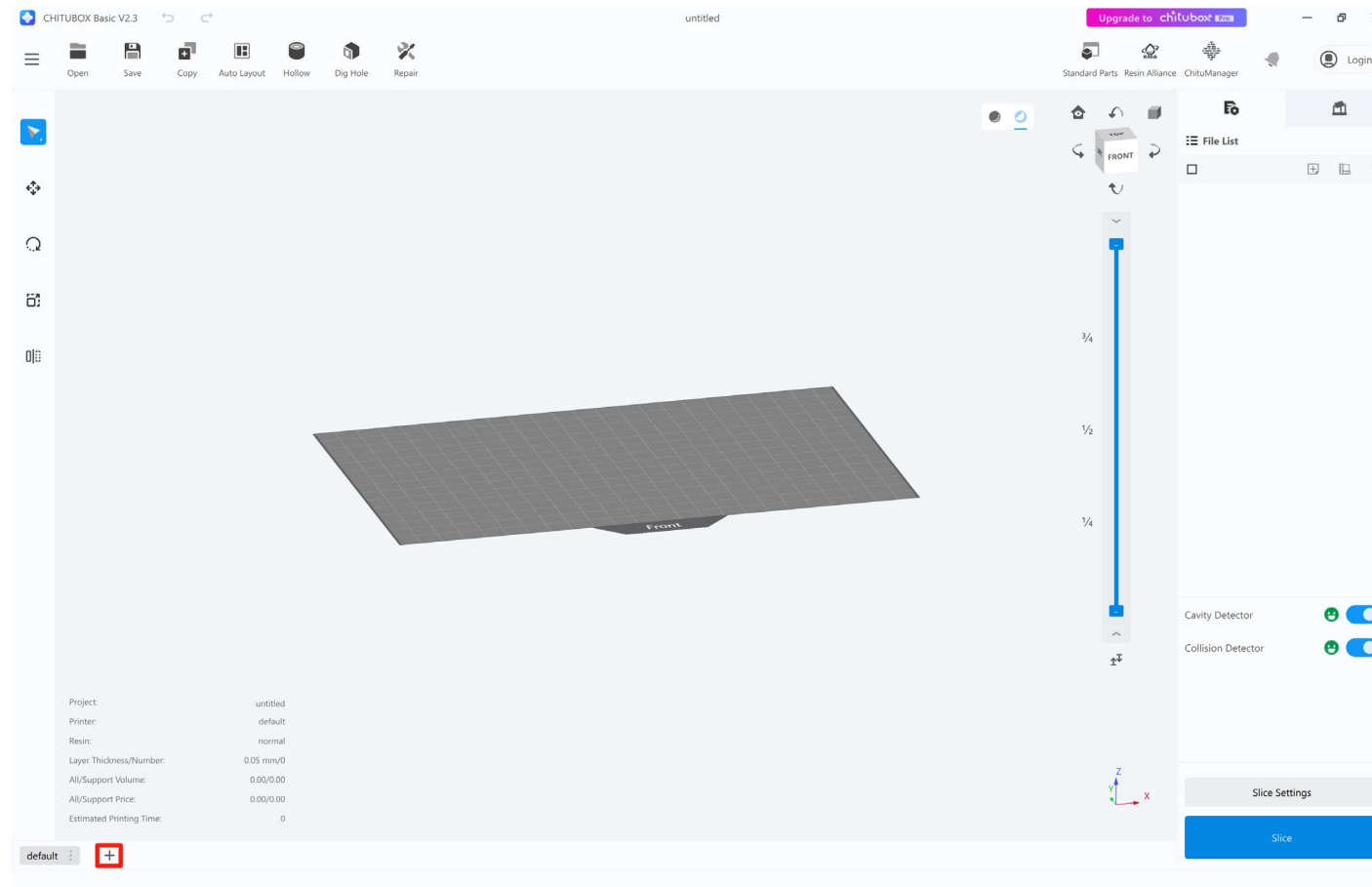
## Step 3. Installation of the slicer software

- **Start installation:** When you confirm the installation path set before, click the "Next" button, please wait patiently, do not close the installation window during the installation process.
- **Installation Complete:** When the installation progress bar is displayed completely to 100%, it means that the software installation is completely completed, and the installation complete page will pop up at this time. On this page, you can choose whether to Launch Chitubox Basic immediately according to your needs.



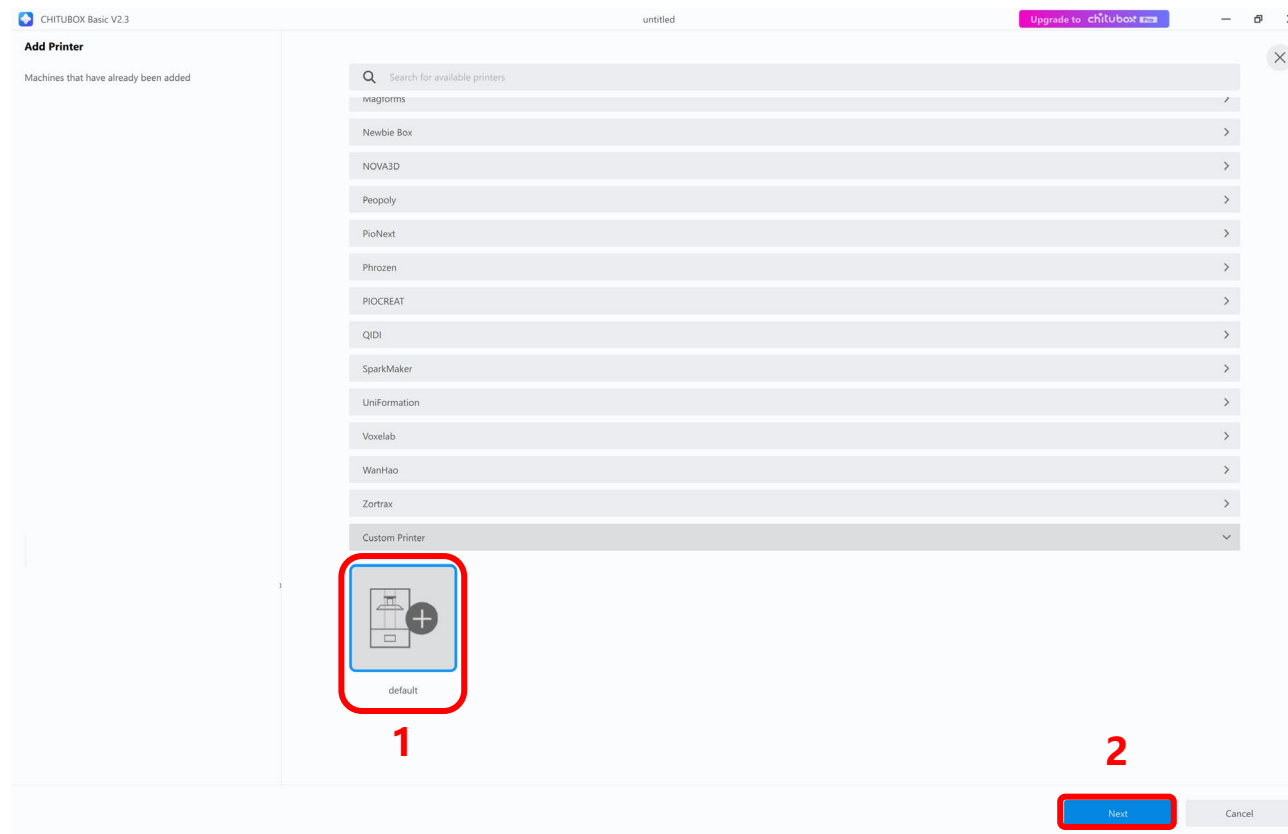
## Step 4. Import the Printer profile

- **Launch Slicer** : Run Chitubox basic: Double-click the Chitubox Basic icon on the desktop of the computer with the mouse to run the slicer software.
- **Click Add "+"**: There is a "+" in the lower left corner of the slicer software, click on it.




## Step 4. Import the Printer profile

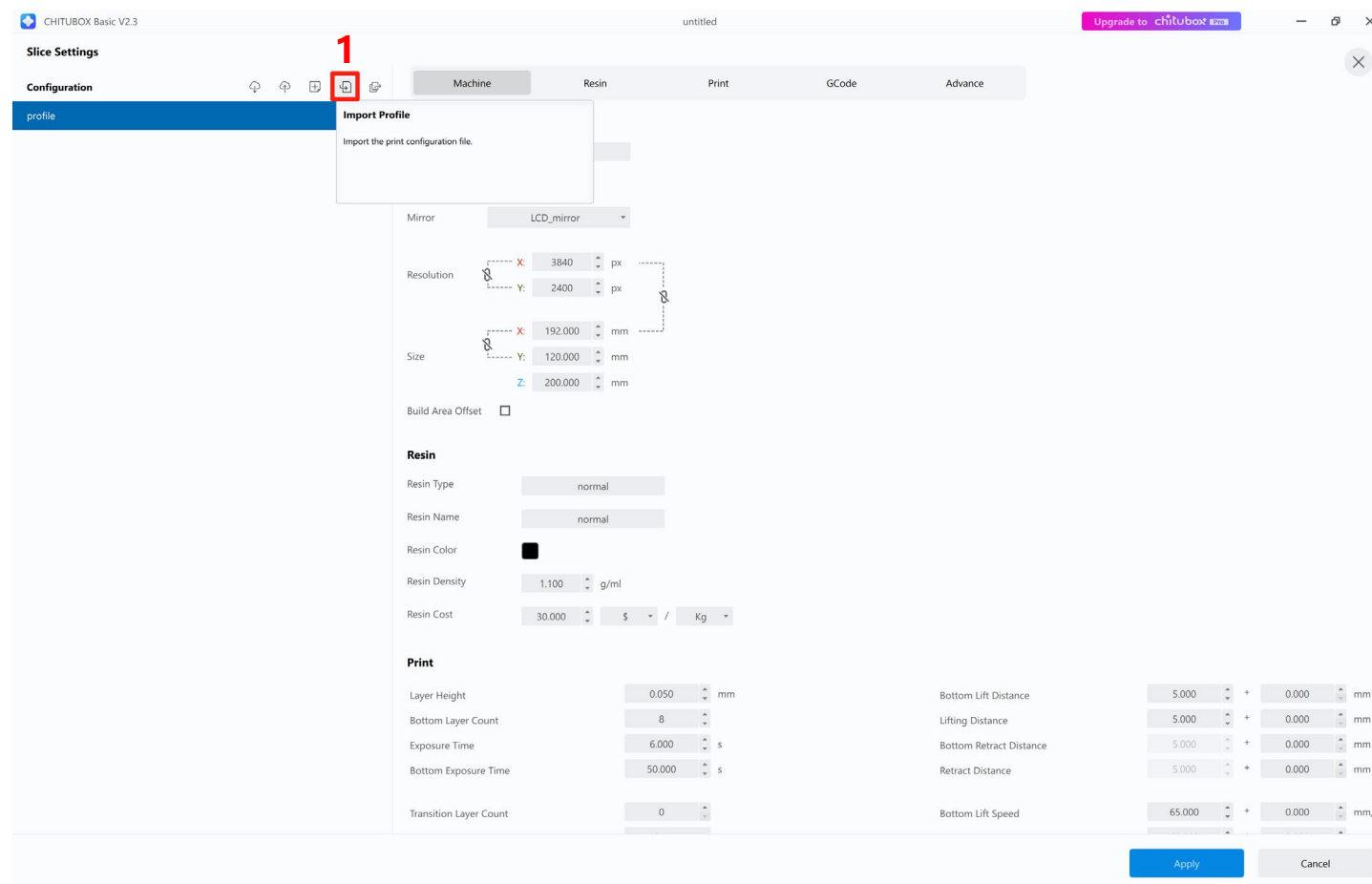
- Use the mouse to click the scroll bar on the right, drop down to the bottom of the page, click "default" and click "Next", as shown in the figure.





## Step 4. Import the Printer profile

- Use the mouse to Click “” to Import Profile, as shown in the figure.



## Step 4. Import the Printer profile

- Double click on the file: D9K Pro\_CHITUBOX\_V23\_all\_4500.cfgx from the desktop to import it into the chitubox basic software. And click Yes.

Name	Status	Date modified	Type	Size
D9K Pro_CHITUBOX_V23_all_4500.cfgx	<span style="color: green;">●</span>	2025/5/27 19:07	CFGX File	290 KB

1

all config file (\*.cfgx;\*.cfg)

Open Cancel

2

CHITUBOX Basic V2.3

untitled

Upgrade to CHITUBOX 4.0

Slice Settings

Configuration

Machine

Name: default

Machine Type: default

Mirror: LCD\_mirror

Resolution: X: 3840, Y: 2400

Size: X: 192.000, Y: 120.000, Z: 300.000

Build Area Offset: ☐

Resin

Resin Type:

Resin Name: normal

Resin Color:

Resin Density: 1.100 g/ml

Resin Cost: 30.000 \$ / Kg

Print

Layer Height: 0.050 mm

Bottom Layer Count: 8

Exposure Time: 6.000 s

Bottom Exposure Time: 50.000 s

Transition Layer Count: 0

Bottom Lift Distance: 5.000 mm

Lifting Distance: 5.000 mm

Bottom Retract Distance: 5.000 mm

Retract Distance: 5.000 mm

Bottom Lift Speed: 65.000 mm/s

Apply the machine parameters from the profile file to the current printer?

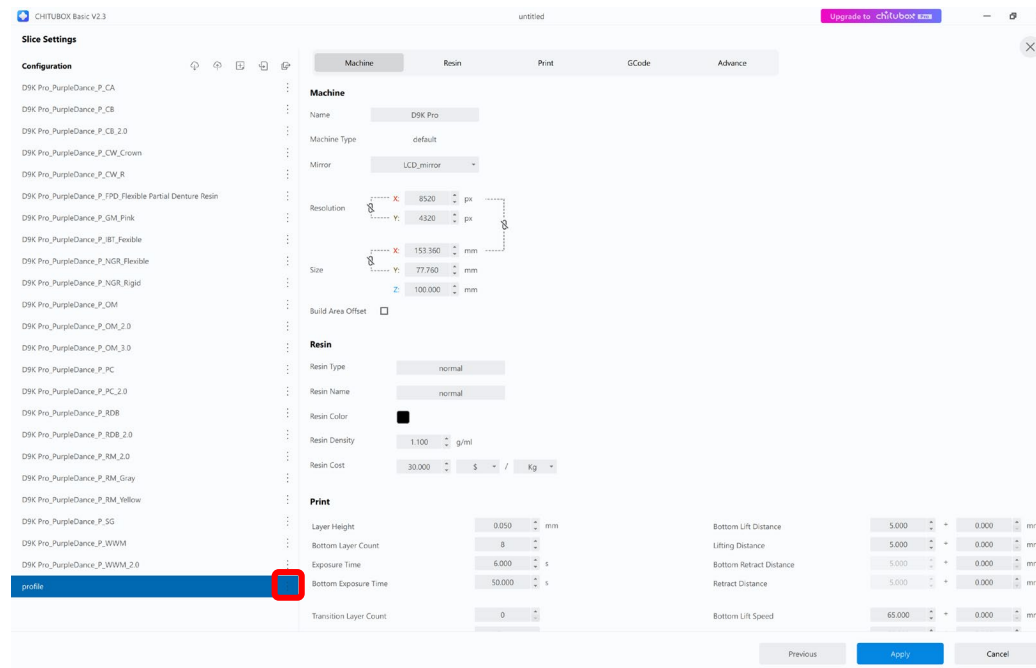
Yes No

Previous Apply Cancel

3

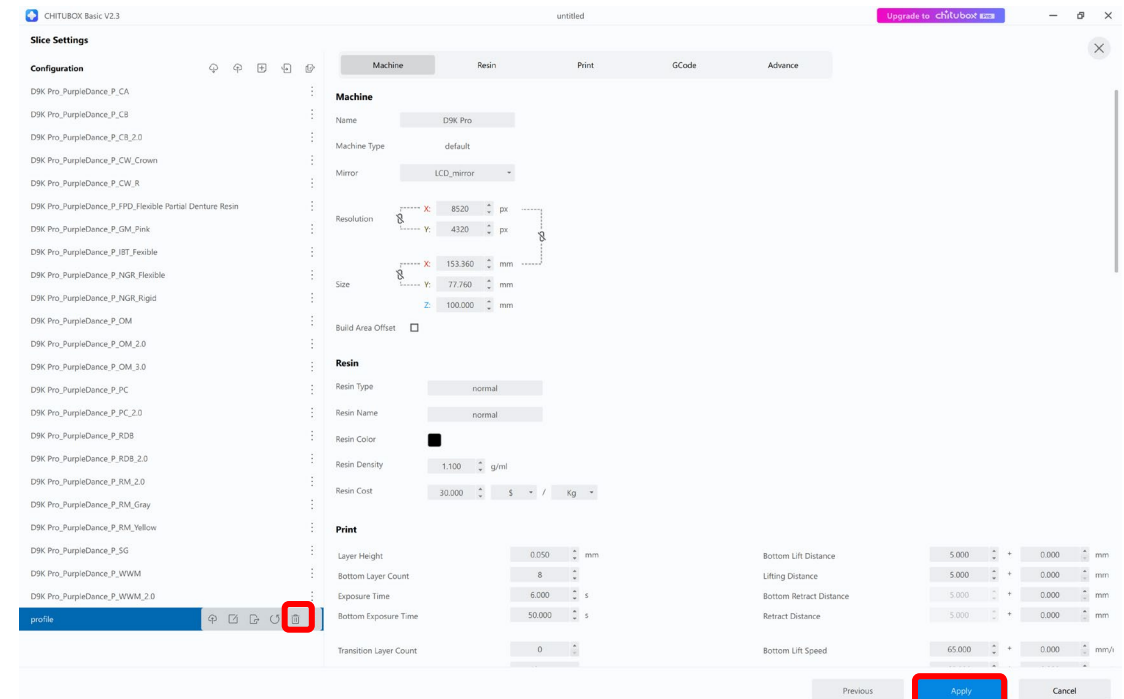
## Step 4. Import the Printer profile

- Delete the Profile file and click on Apply.



1

- The printer and resin materials parameters have been set up.

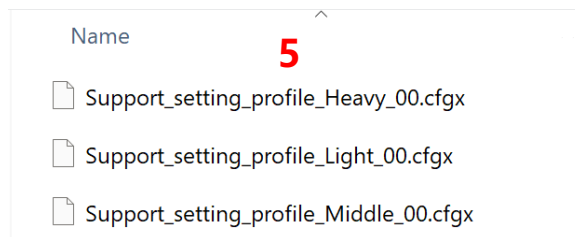
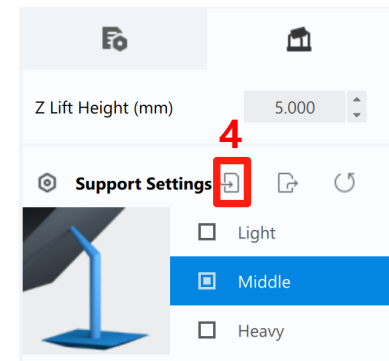
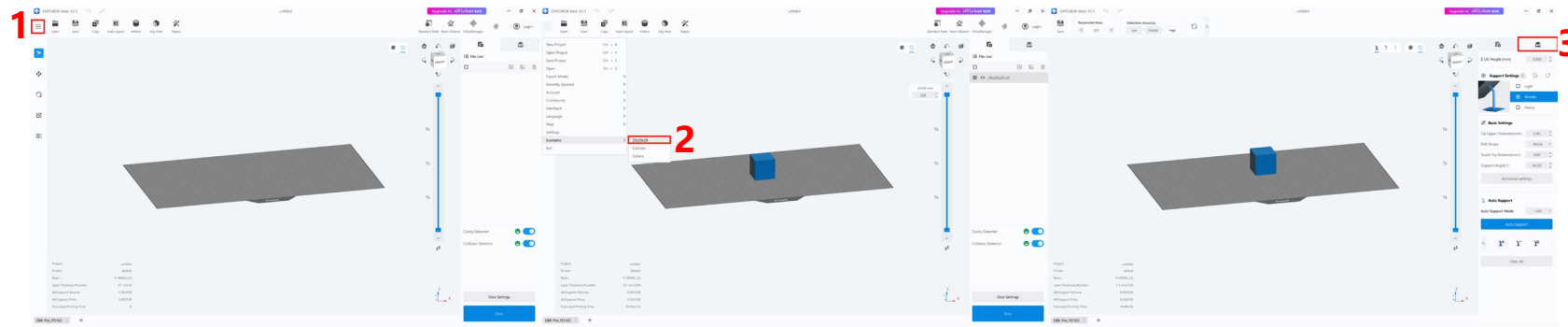


2

3

## Step 5. Import the Support profiles

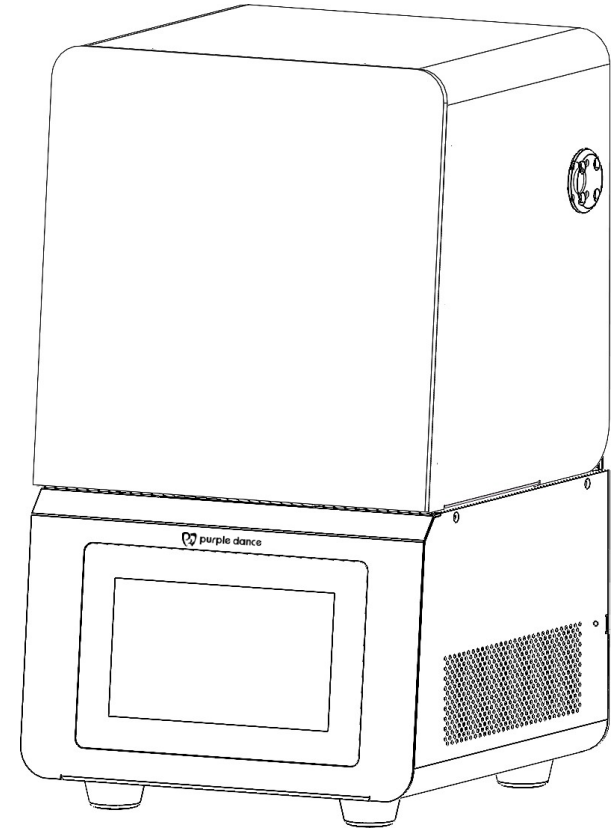
- Click this icon in the upper left corner of the slicer software " ≡ "
- Select an example model and import it;
- Click the support settings icon in the upper right corner of the slicer software;
- Click the Import icon " ⇨ " , select three support profiles from the desktop, as shown in Figure 5



**At this point, the parameters of the slicer software have been completely set.  
Beginning on the next page, you will find instructions for using the printer.**

# D9K Pro 3D Printer

## User Manual



## **Thank you for purchasing Purple Dance brand products**

1. After receiving the product, please confirm whether the equipment is intact and the accessories. If there is any damage or missing, please timely contact us at [service@purpledance.net](mailto:service@purpledance.net)
2. To ensure the performance of each product, each product will undergo strict printing tests before leaving the factory.

## Precautions for using this product

1. Children and untrained individuals should not operate the equipment alone.
2. Please refer to this Guide for initial printer setup.
3. Moving parts in the printer may cause injuries.
4. If you run into an emergency during use, please turn off the power supply of the 3D printer first.
5. When operating the 3D printer, please wear a mask and gloves to avoid direct skin contact with the photopolymer resin.
6. If you have any problems with the printer, please contact us at [service@purpledance.net](mailto:service@purpledance.net) . Please do not disassemble or modify 3D printers by yourself, otherwise, the warranty will expire.



# 3D Printer Tech Specs

**Operation:** 7-inch Touch Screen

**Slicer Software:** ChituBox Basic & Chitubox Dental

**Connectivity:** USB Interface

**Technology:** MSLA Stereolithography

**Light Source:** COB (wavelength 405nm)

**XY Resolution:** 28.5\*28.5μm (7680\*4320)

**Power Requirements:** 100-240V 50/60 Hz 24V 10A

**Build Volume: PD101:** 218.88mm (L)\*123.12mm (W)\*100mm (H) / **PD103:** 228.096mm (L)\*128.304mm (W)\*100mm (H)

**Package Size:** 205mm(L)\*200mm(W)\*155mm(H)

**Gross Weight:** 22kg

**Net Weight:** 18.5KG

# Packing List

1. USB Flash Drive × 1pcs (Please format the USB flash drive before use, which will help the printer recognize the USB flash drive faster.)

2. Power Adapter × 1pcs

3. Scissors × 1pcs

4. Wrench Set × 1pcs

5. Metal Shovel × 1pcs

6. Plastic Scraper × 1pcs

7. Cleaning Brush × 1pcs

8. Release Film × 1pcs



USB flash drive



Power adapter



Scissors



Wrench set



Plastic scraper



Metal shovel

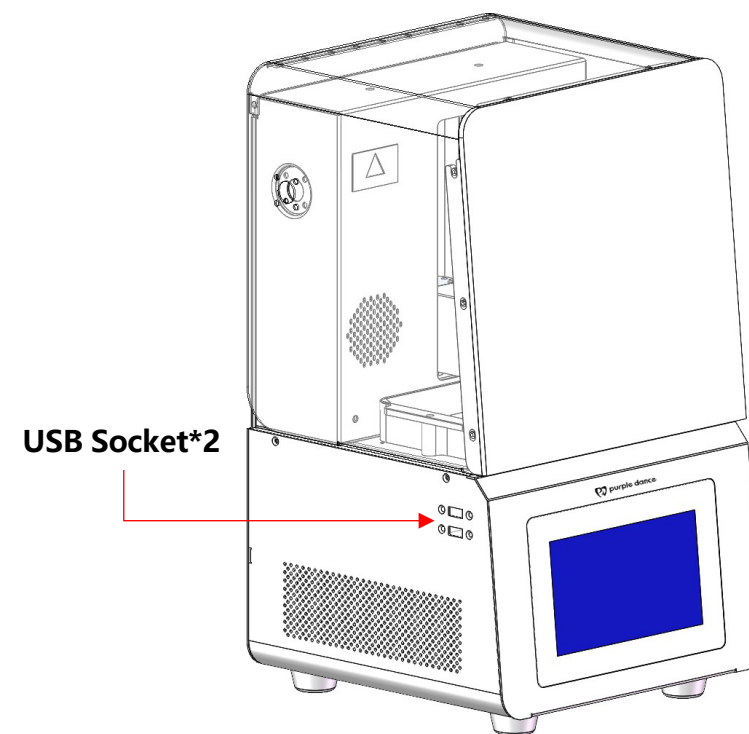
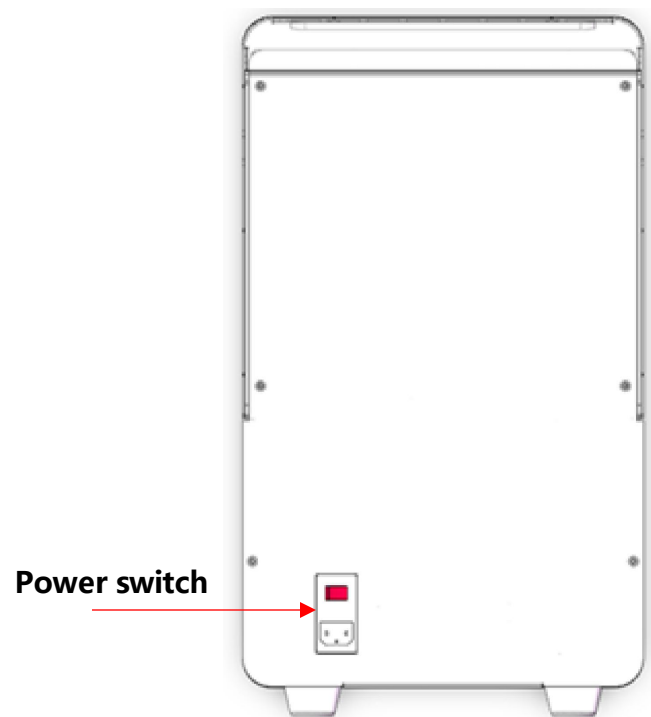
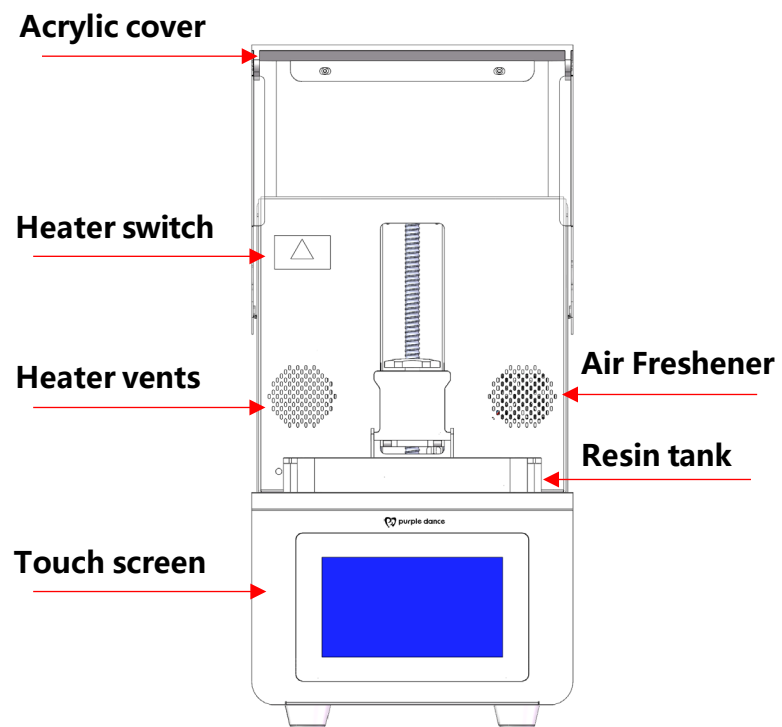


Cleaning brush



Release film

# Printer Introduction



# Language settings

The default language of the printer is English, if you need to set the language of your country, follow the steps in the figure below to change it.

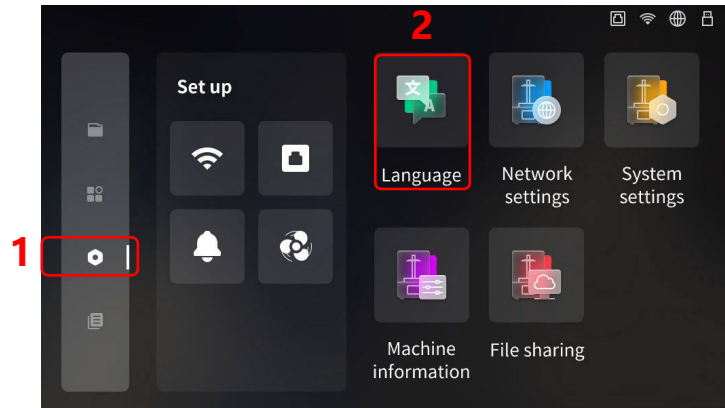


Figure A

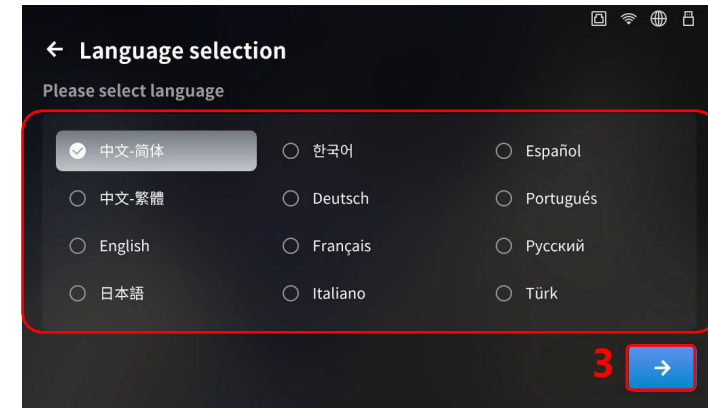


Figure B

# Leveling

1. Remove the resin tank, then loosen the 4 mounting screws on the plate until the print platform is free to move up and down.(See Figure A)

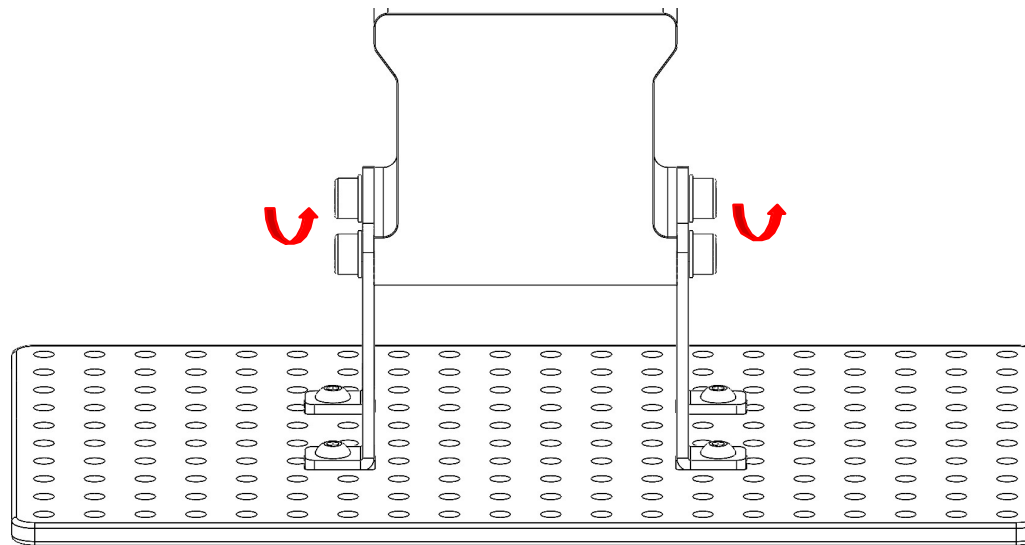


Figure A

**This product is factory leveled and does not need to be leveled the first time it is used. If re-leveling is required, follow the steps above.**

# Leveling

2. Place a A4 paper between the print platform and the LCD screen, then click "Manual control"(See Figure B). Click the print platform down motion button (See Figure C) to run the print platform to the bottom, wait until the print platform stops moving, and then press down on the surface of the print platform with one hand and lock the set screws with the other.

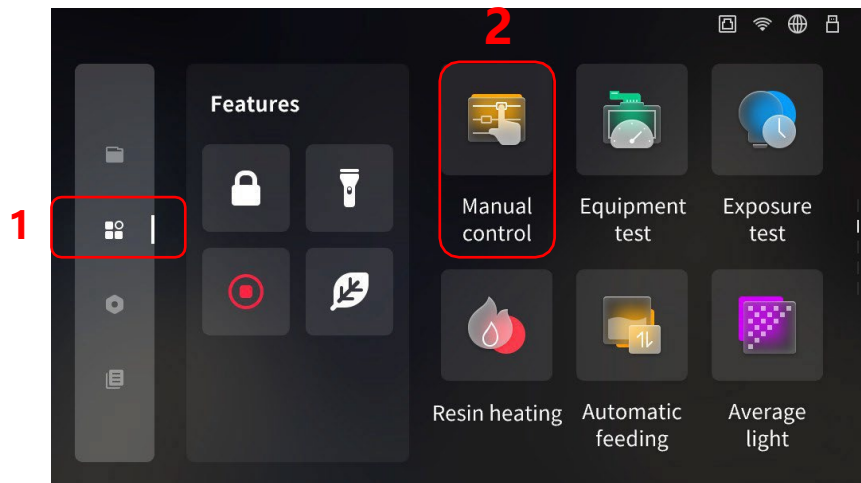


Figure B

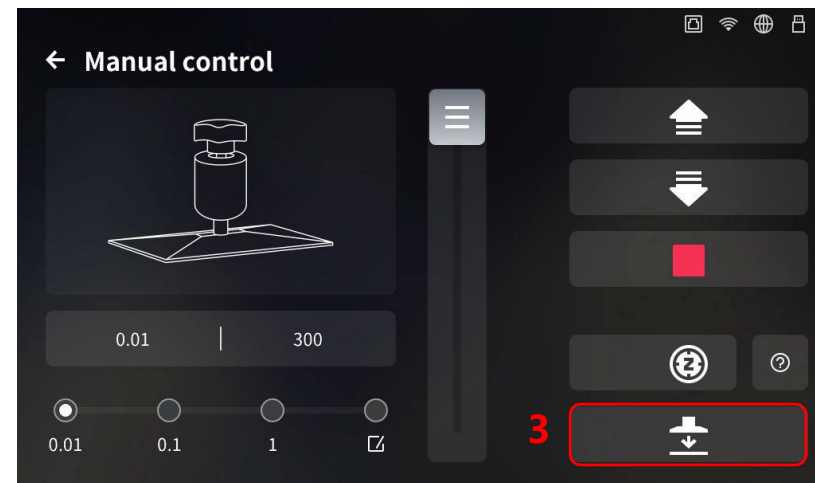


Figure C

**3. Print platform down motion button**

This product is factory leveled and does not need to be leveled the first time it is used. If re-leveling is required, follow the steps above.

# Leveling

3. Click "Set Z=0", The interface pops up a confirmation window, click " Sure" to complete the setting. (See Figure D)  
At this point, the printer's Z-axis position is set to the initial height of the first layer.



Figure D

**4. Set Z=0**

This product is factory leveled and does not need to be leveled the first time it is used. If re-leveling is required, follow the steps above.

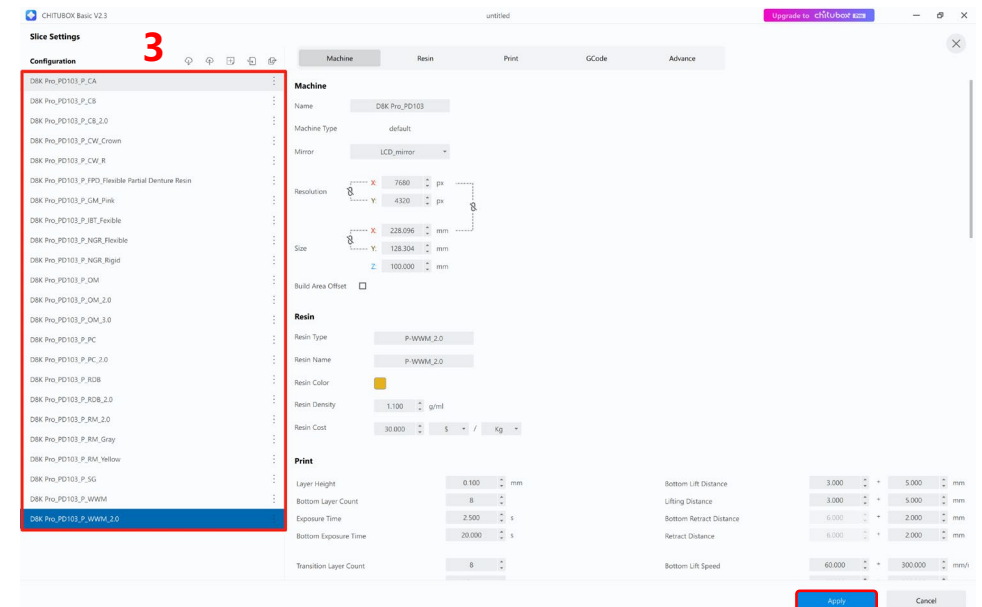
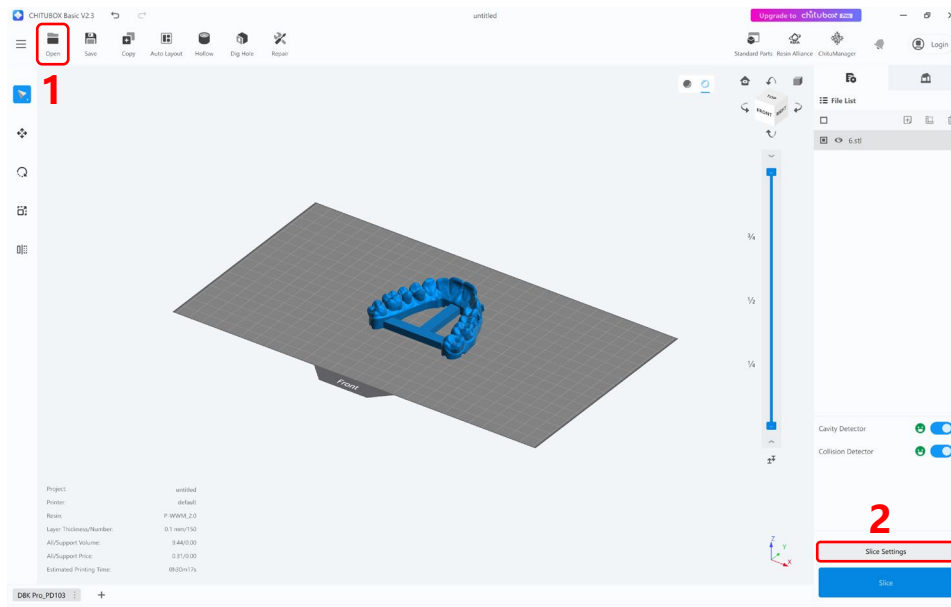
# Test Printing

## 1. Import the model file into the slicer software

Click on the open icon in the slicer software, select the model file you want to print from your computer.

## 2. Select the type of resin material

Click on the slice settings and select the resin material and click Apply.





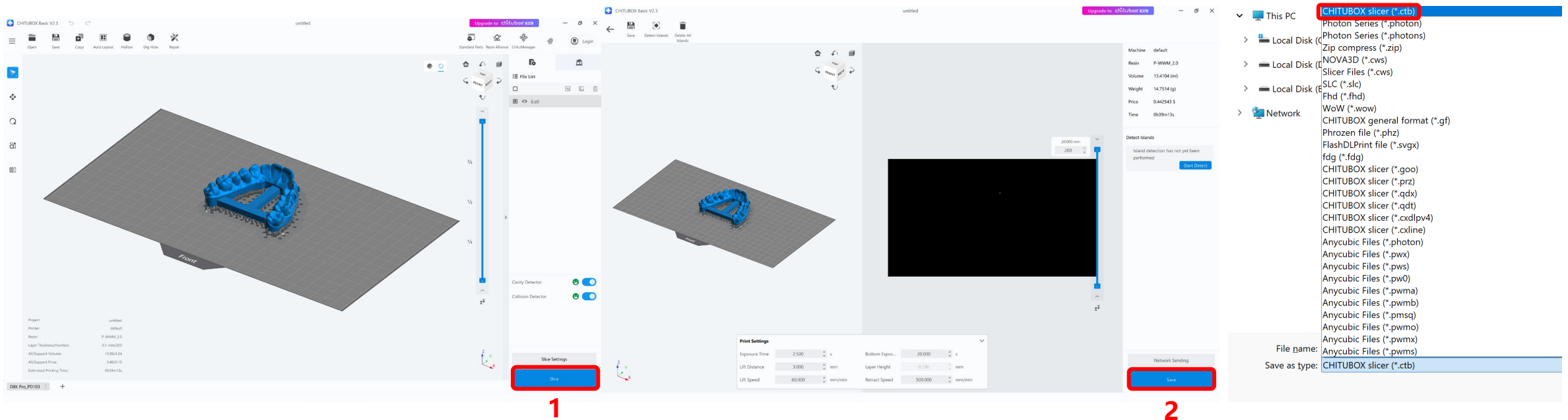
# Test Printing

## 3. Slice the model file

Click Slice

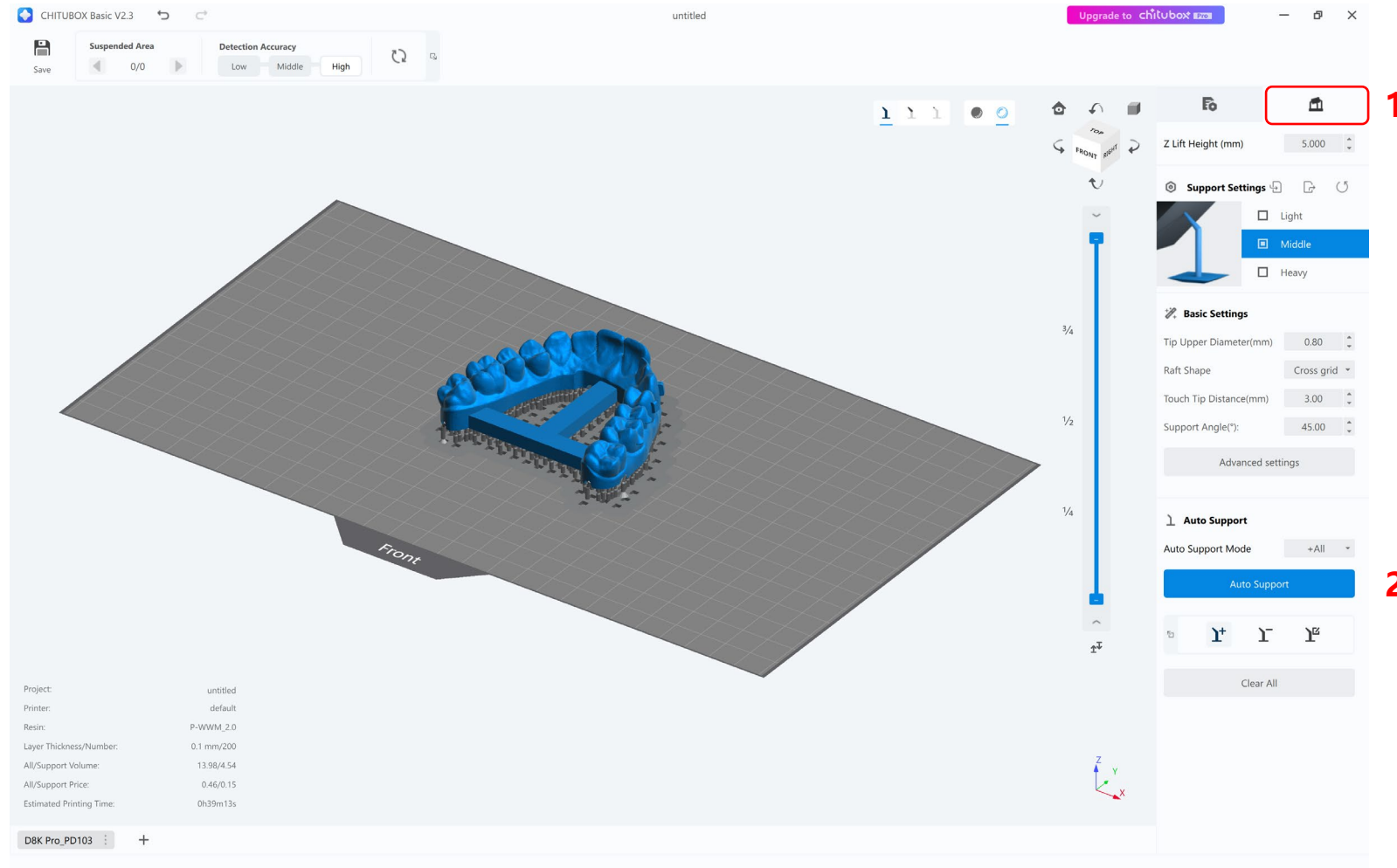
## 4. Save sliced file

Click Save as type and select chitubox slicer \*.ctb, enter the file name and save the sliced file to a USB drive, insert the USB drive into the printer, click U Disk on the printer's touch screen, select the sliced file, and print it.



# Test Printing

Click here if you want to add support to the bottom of the model



# Warranty Statement

1. From the date of purchase, Purple Dance 3D printer is entitled to 1-year free warranty service, except for consumables of the LCD screen and the release film.
2. The free warranty does NOT include problems caused by self-disassembly and improper use, wear and tear of the machine housing, etc.

**Email Support: [service@purpledance.net](mailto:service@purpledance.net)**

**Shenzhen Purple Dance Technology Co., Ltd.**

